

Green eeTee®



Premium eeTee Instant Granules

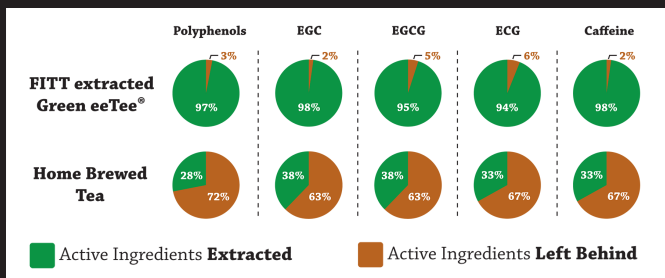
Green eeTee® uses a cutting edge full spectrum cold extraction technology called FITT™ (*Fingerprint Identical Transfer Technology*) to release both the water soluble and alcohol soluble compounds. FITT™ captures the aroma, color and taste of green tea leaves almost identically.



Easy

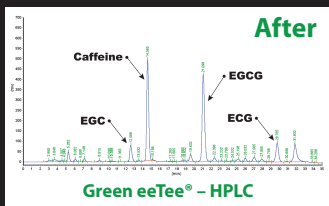
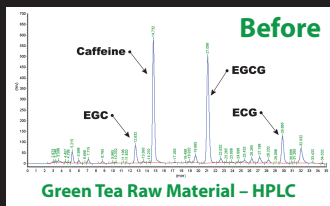
eeTee® granules dissolve clear in water within 3 seconds.

Effective



With FITT™ (*Fingerprint Identical Transfer Technology*™), 94-98% of all of the tea's active ingredients are safely and effectively transferred to the eeTee® extract, significantly higher than the 28-38% in home brewed teas.

RAW
Extraction
≤ 104° F



The fingerprints (HPLC-*High Performance Liquid Chromatography*) of the FITT™ extracts are almost identical to those of the original plants.

Ecological

FITT™ technology uses 33% less energy than conventional industrial extraction. FITT™ produces 1/20th the waste of home brewing and 1/7 the waste of conventional industrial extraction.



Cutting Edge FITT Extraction Equipment

(888) 55-TONIC

dragonherbs.com



**Make Iced Tea
On The Fly in 3 Seconds!**

Green eeTee®

Premium eeTee Instant Granules

easy • economical • Tea • effective • ecological



Green eeTee® in Jar

\$24.50 (Code 813)

3 oz. / 86.4 g / 75 servings

Green eeTee® 30 Sticks

\$29.95 (Code 812)

2 g packets / 30 servings



Pour Green eeTee® into room temperature water



Add ice



Voila! Iced tea on the fly!